

Words with 'soft c' spelt with 'ce'



twinkl

This week, we are looking at words that have a 'soft c'.
A 'soft c' makes an /s/ sound.



This can mean that some words that may sound like they start with an 's' can actually begin with the letter 'c'.

For example:



centre

If the second letter of a word that starts with an /s/ sound is an 'e', 'i' or 'y', the sound **could** in fact be made with a 'c'!

This week, we are going to concentrate on words that have a 'soft c' sound spelt with 'ce' like 'centre'.

In the next two minutes, work with a partner to see how many 'soft c' with 'ce' words that you can think of?

Remember: the 'soft c' sound doesn't always have to be at the beginning of the word!



STOP

Which 'soft c' with 'ce' words have you thought of?

Did you think of any of these words?

celebrate

centre

certificate

certain

recent

century

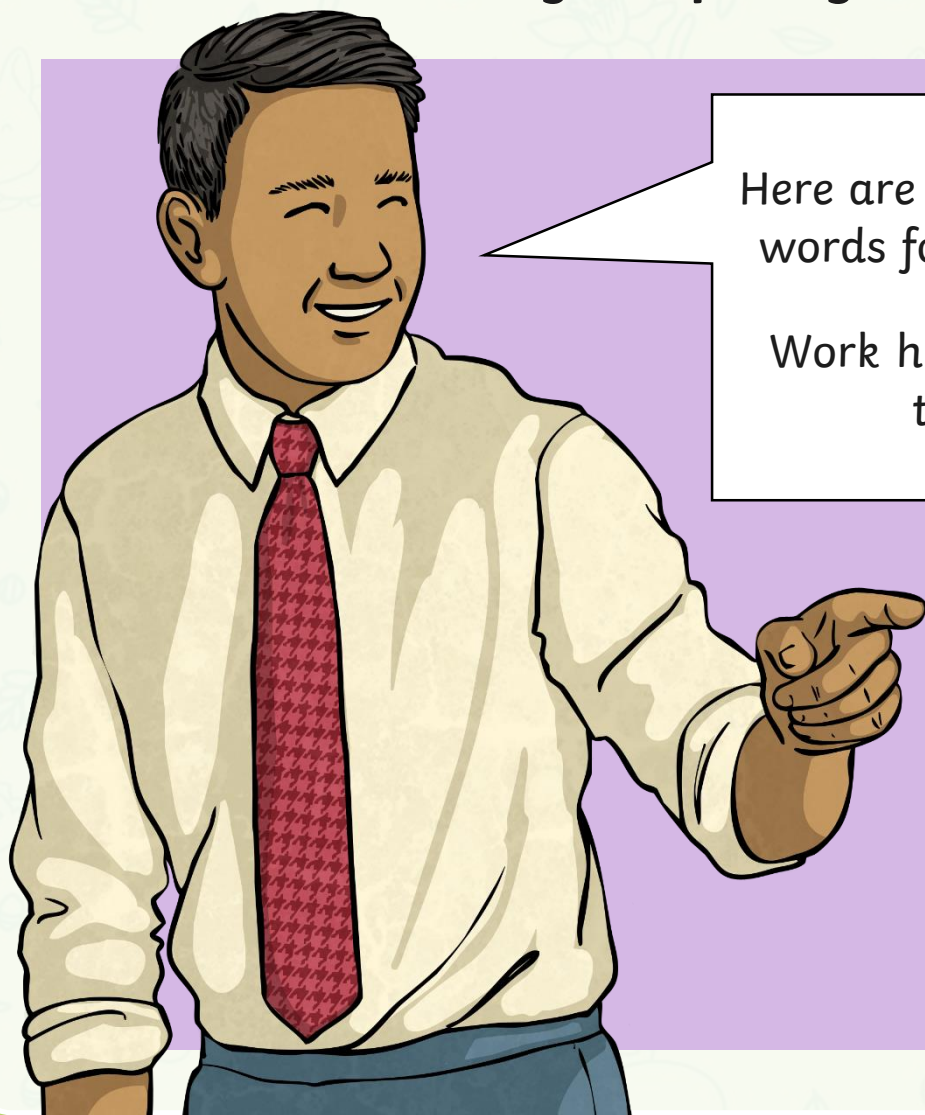
notice

sentence

experience

ceremony

Here are your spelling words for this week.



Here are your spelling words for this week.

Work hard to learn them.

Week 2

Words with 'soft c'
spelt with 'ce'

centre
century
certain
recent
experience
sentence
notice
celebrate
ceremony
certificate

[twinkl.co.uk](https://www.twinkl.co.uk)

A repeating pattern of line art illustrations on a light green background. The illustrations include rabbits, daffodils, eggs, and small leaves. The pattern is dense and covers the entire page.

twinkl