

Words Ending in the Suffix -al



This week, we are going to look at adding words ending in the suffix -al.

Can you remember what a suffix is?

A suffix is a letter or group of letters added at the end of a root word that creates a new word with a different meaning.



How does the suffix -al affect the meaning of a root word?

Discuss how adding the -al suffix changes the meaning of these root words...

personal

accidental

national

The -al suffix means 'of' or 'relating to'. By adding it to these root words, they become ***adjectives***.

Do you know what they all mean?

If the root word ends in a consonant, how does it change before the -al suffix is added? Look...

sensation



sensational

medic



medical

If the root word ends in a consonant, it doesn't change before the suffix -al is added.



If the root word ends in a vowel, how does it change before the -al suffix is added? Look...

nature



natural

Take off the vowel

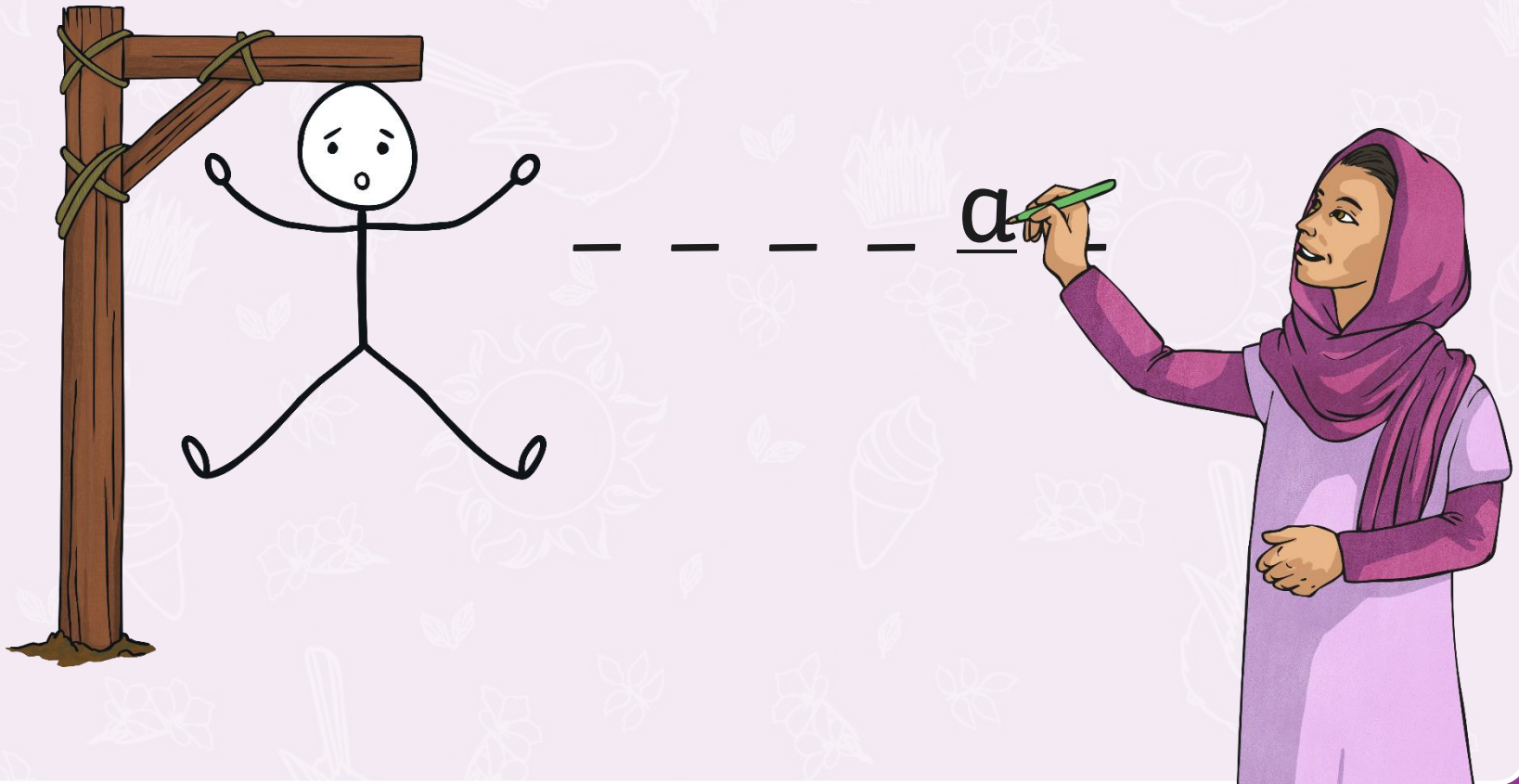
If the root word ends in a vowel, it changes. The vowel is removed before the suffix -al is added?



Play Hangman.

Choose one of the spelling words from this this week's list.
Can you and your partner guess the letters within the -al suffix
word before it's too late?

Draw each part of the hangman frame each time a wrong letter
selected.



Here are your spelling words for this week.

Remember, they
all contain the
suffix -al
meaning 'of' or
'relating to'.

natural

occasional

actual

accidental

medical

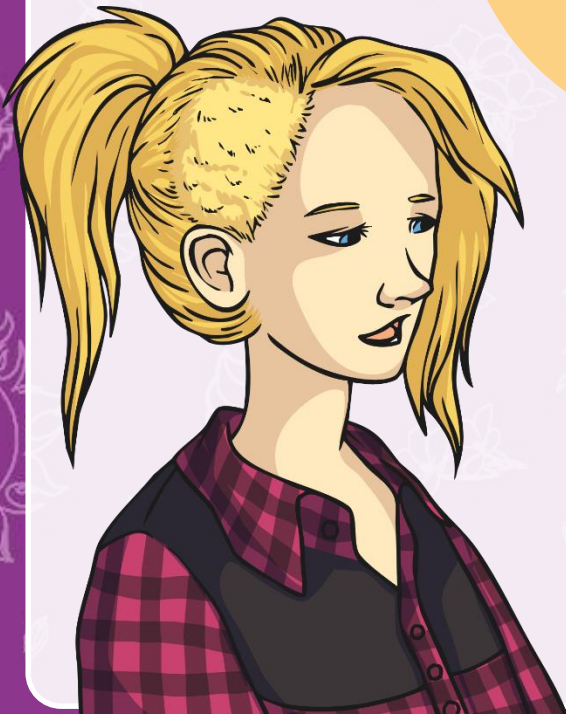
national

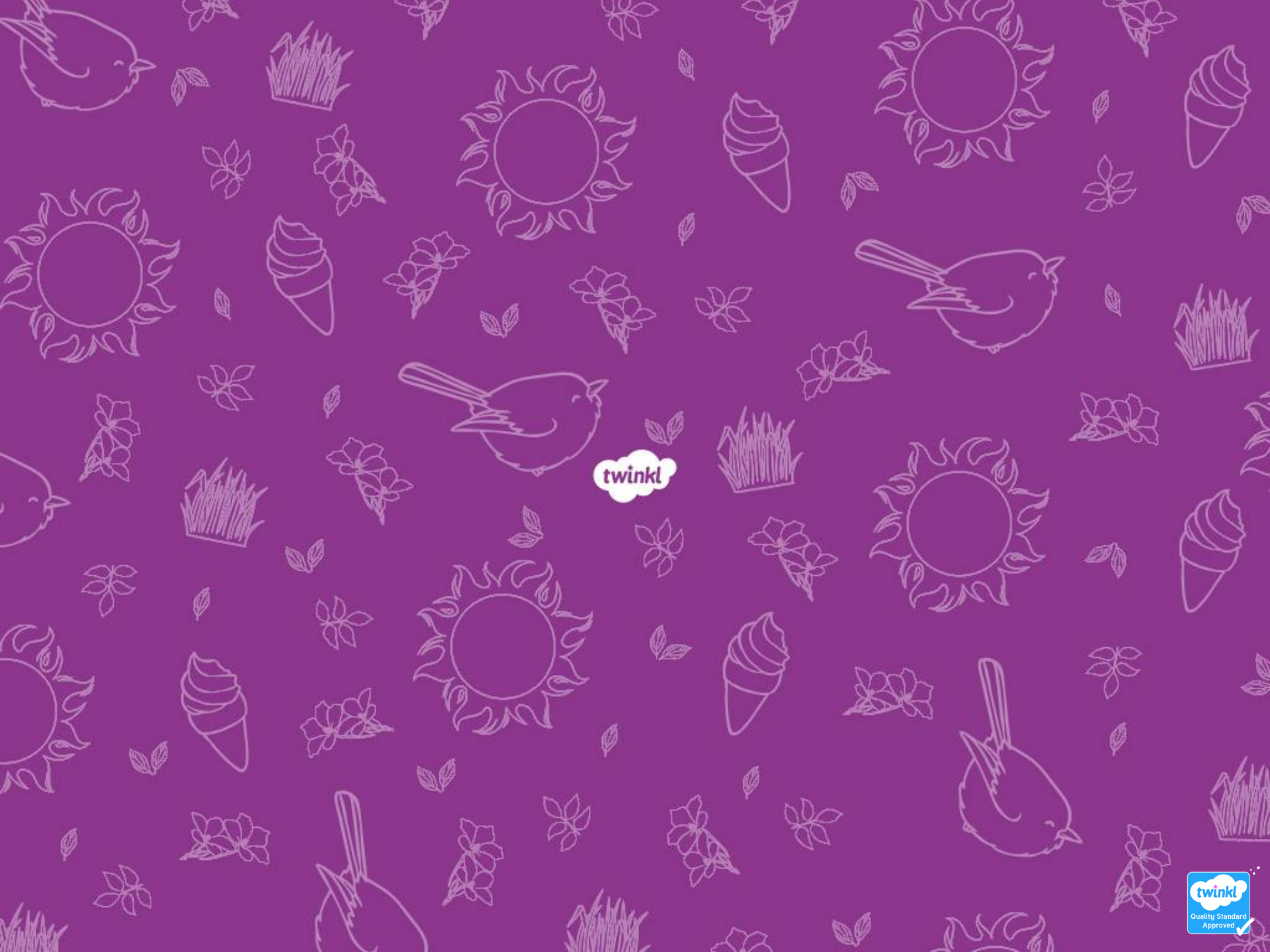
capital

vocal

sensational

personal





twinkl