

General items

Please make sure your child is in the correct uniform. Full guidance is on our website.

Grey trousers/skirts; Bottle green sweatshirts/cardigans; White shirts/polo shirts; bottle green tie with gold stripe; black shoes; black, grey or white socks or tights.



PE

PE days

Children should have a PE kit in school on PE days. They should have a T-shirt and jumper in their house colour; black shorts and tracksuit bottoms and trainers. Please remember children are not permitted to wear earrings in PE lessons.

Adams— Wednesday and Thursday

Farah— Monday and Tuesday

Hoy— Tuesday and Wednesday

Peacock — Monday and Tuesday

Homework

Homework is set on **Friday** for return by the following **Thursday**.

It is sent home in a homework folder and consists of; spellings, topic words and TT Rockstars.



Library

Year 3 have the opportunity to visit the library on **Tuesday**. Our library is open to our families after school on **Fridays** until 4pm.



Get ready for Summer 1

In Summer 1 we will be learning about Ancient Greece as our next History topic. We will be finding out about how the Ancient Greeks influenced our modern day lives. We will be reading dragon books in English which will inspire our Art project.

Year 3



Spring 2



Adams

Farah

Hoy

Peacock

Our team

Year Leader – Mrs Towler

Class Teachers & Teaching assistants

Adams—Mrs Towler and Mrs Conrad & Mrs Tulk and Miss Oosterwijk

Farah—Miss Quade and Mrs Conrad & Mrs Bingham

Hoy—Miss Bundy & Mrs Leunig, Miss Oosterwijk and Miss Fowler

Peacock—Miss Brown and Mrs Wheeler

Key dates

17th-21st February—Half term holiday

Monday 23rd February—INSET day—school closed

Thursday 27th February—Hoy and Peacock visit Spinnaker Tower

Friday 28th February—Adams and Farah visit Spinnaker Tower

Thursday 6th March—World Book Day

Friday 21st March—Comic Relief

Monday 31st March—Rock Steady Concert—2:30pm

Friday 4th April—Last day of term

7th-21st April—Easter Holidays

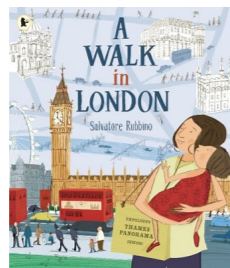
Tuesday 22nd April—Return to school



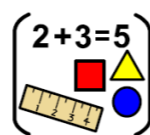
English

In English we will be reading the book *A Walk in London* by Salvatore Rubbino. Our focus on writing this half term will be using paragraphs and we will be writing about walking around the city of Portsmouth. We will be discussing both fiction and non-fiction texts.

paragraph, summarise, headings, subheadings.



This half term we will be continuing Maths No Problem, and consolidating our learning about multiplication and division. We will also be learning about different elements of shape, space and measure, starting with length. We will then move onto mass and volume.



Maths

length, mass, volume



PE

Our indoor PE will be introducing agility and developing sending and retrieving skills whilst working with a partner.

agility, tactic, combination

Our outdoor PE will be learning how to play tag rugby. We will be developing our throwing and catching skills whilst learning how to work successfully in a team.

dodging, passing, defending

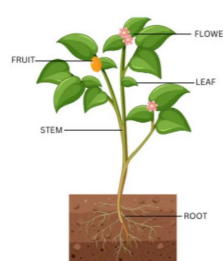


Science

In Science, we are looking at Plants. We will be exploring the different parts of a plants by making observations. We will be learning about what a plant needs to survive and how water is transferred within a plant.

pollination, dispersal, nutrients, producers

PARTS OF A PLANT



Computing

In these sessions we will be continuing our work on branching databases. We will be using iPads to create these databases following planning sessions.

animation, frame, sequence, import

Our online safety focus this half term will be learning about health, wellbeing and lifestyle when using computing devices.



Geography

We are moving onto Geography this half term and are looking at countries which surround the Mediterranean Sea. We will be looking specifically at the country Greece and it's human and physical features.

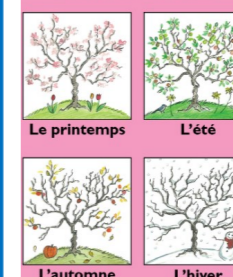
countries, cities, river, peninsula



French

This half term in French, we will be looking at the different seasons. We will be learning how to write these words in sentences .

Les Saisons



le printemps, l'ete, l'automne, l'hiver



PSHE

In PSHE, we will continue thinking about the question "What are families like?"

We will discuss different types of family relationships; different family structures; and changes in families.

relative, blended family,



RE

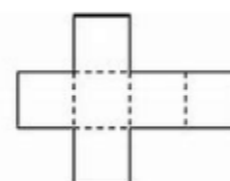
In RE, we will be exploring the concept of 'Symbol' through the Christian religion and will be learning about the Easter Story.

symbol, memory, hope



DT

In DT this half term we will be looking at different shell structures. We will be creating nets and designing packaging for an Easter themed product.

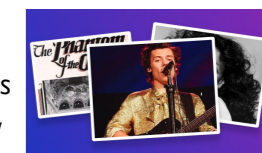


net, prism, scoring



Music

All classes follow the Charanga music scheme.



Our focus will be on listening and responding to different music styles. We will be looking at different music genres such as rock, pop and classical.

genre, timbre, time structure