



# CLA joint strategy

Monday 16 October 2023

Believe, Inspire, Achieve

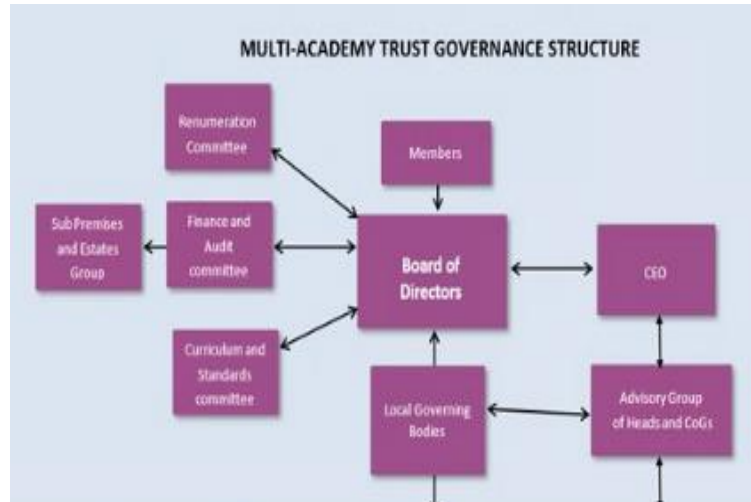


# Introductions - who we are



Believe, Inspire, Achieve

# Our Local Governing Body



Believe, Inspire, Achieve

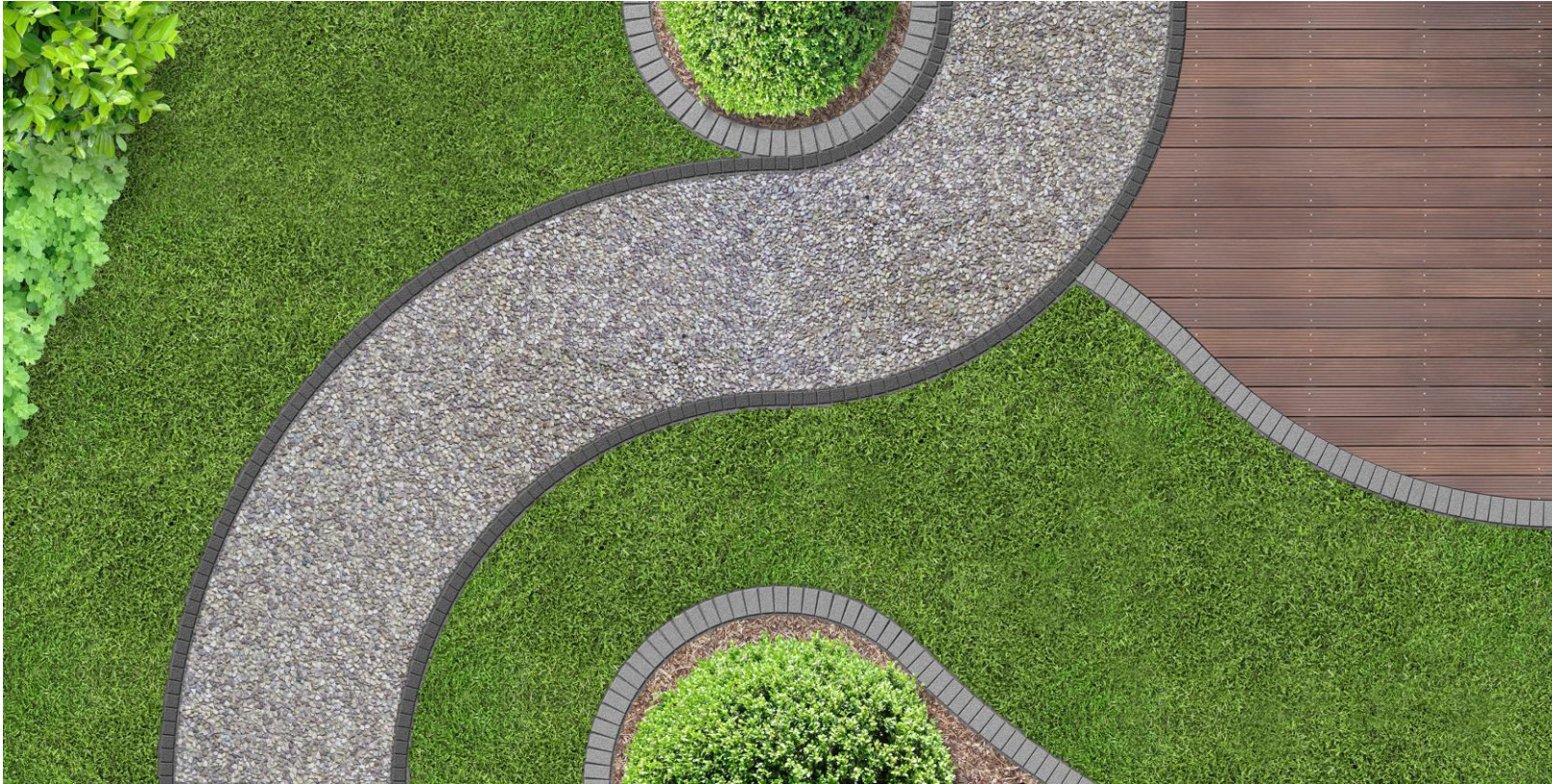
# This evening we wanted to share with you

- ▶ What we are trying to work towards for our children
- ▶ Where we've been, where we are now, and how we decide where to go
- ▶ Things that affect our schools differently to others
- ▶ How we can work together for our children



Believe, Inspire, Achieve

# Where the school has been



Believe, Inspire, Achieve

# The national picture for schools

- ▶ Curriculum
- ▶ Phonics
- ▶ Multiplication tables check
- ▶ Reception baseline assessment
- ▶ 'catch up' and 'recovery'
- ▶ Digital strategy
- ▶ Senior Mental Health Lead
- ▶ Attendance
- ▶ School Day Length
- ▶ Layers of Safeguarding

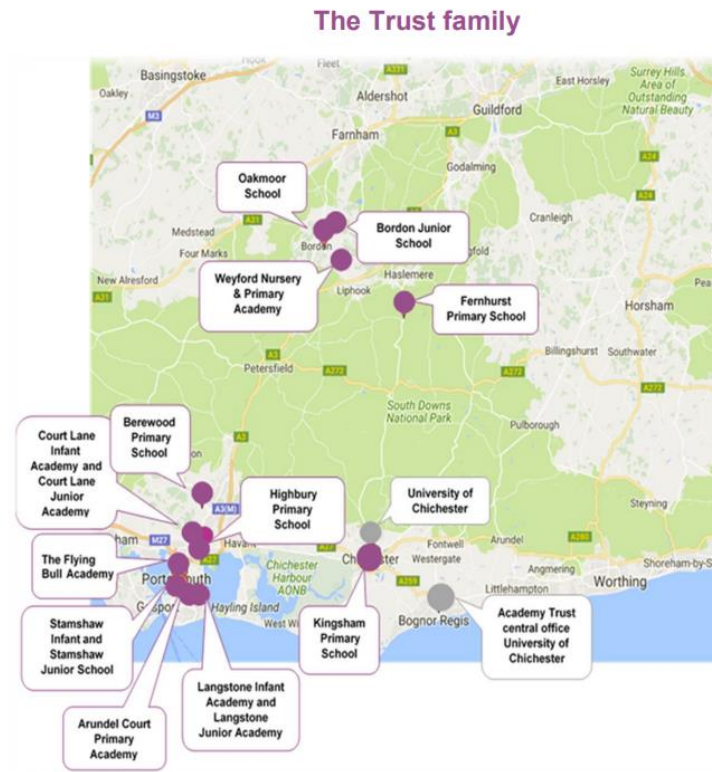


Believe, Inspire, Achieve

# Part of Portsmouth, part of a Multi Academy Trust

- ▶ Portsmouth Educational Improvement Area ('levelling up')
- ▶ Restorative approach across the city
- ▶ Health and Social Care changes locally: ND profiling, Family Support Plans
- ▶ Our Trust values:  
**Achieve More, Challenge Thinking, Shape Futures**
- ▶ Trust collective improvement: Oracy, Curriculum Development
- ▶ Trust expertise: we support and challenge each other

Believe, Inspire, Achieve



# How does funding affect Court Lane Academies?



Funding stream	How does our funding compare to other schools?
Per pupil	Same for all primary age pupils
Deprivation	Lowest 20% nationally
Prior attainment	Generally, below other schools
English as an additional language	Low
Mobility	Zero
Lump sum	Same for all schools (£129k)
Minimum Per Pupil Level	Juniors 1 of 4 in the LA
Notional SEN (plus 'top up')	Together, 75% of the legal minimum expenditure

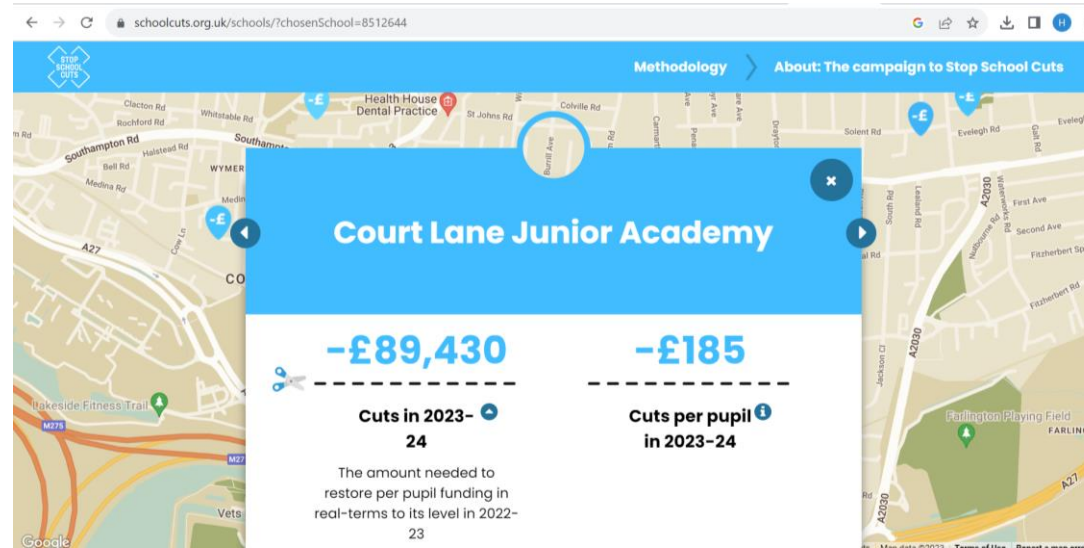
Pays for: staff, pensions, insurances, buildings costs, resources, energy, insurance, IT, refuse, 'free' school meals, consultants, swimming (KS2), trips, hedges, furniture, painting....

Believe, Inspire, Achieve

# How does funding affect Court Lane Academies?

- ▶ Challenging in terms of:
  - ▶ Staffing
  - ▶ Trips and resources
  - ▶ Clubs
  - ▶ Catch up
  - ▶ Fabric of the building
- ▶ Fortunate in terms of:
  - ▶ CLACA
  - ▶ Amazing staff
  - ▶ Supportive families
  - ▶ Kind, enthusiastic children
  - ▶ Our Trust family

Believe, Inspire, Achieve



# Journey to Excellence (3 years) Curriculum and Our People

## Curriculum

- ▶ Our curriculum and planning is responsive to pupils' clearly identified needs
- ▶ Sequential and progressive wider curriculum has positive impact for pupils



## Our People

- ▶ Staff are enabled to perform their role to a high standard
- ▶ Pupils are proactive and have ownership of their school experience
- ▶ Parental engagement has a positive impact on their child's education



# Court Lane Infants the Journey to Excellence (3 years) Infrastructure and Capital



3.1 Digital strategy & EdTech tools for learning



3.2 Maintaining H&S standards and achieving efficiencies



3.3 Buildings and Grounds



# Court Lane Juniors the Journey to Excellence (3 years)



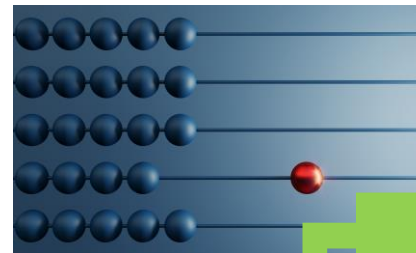
**Exemplary  
teaching**



## Curriculum



**Believe, Inspire, Achieve**



**Excellent  
outcomes**

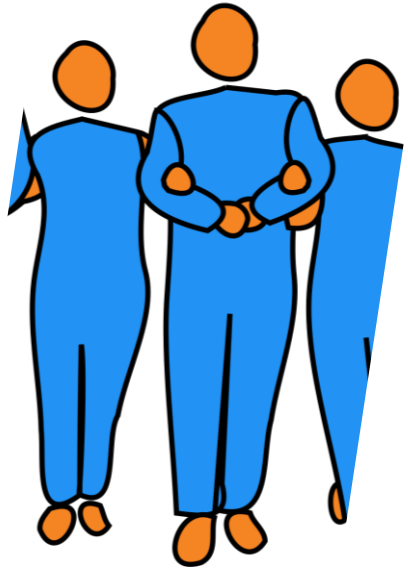


**Enriching and  
intentional curriculum**



**University  
of Chichester**  
Academy Trust

# Court Lane Juniors the Journey to Excellence (3 years)



## Our People, Our Learners

All staff developed

Proactive pupils

Parent/carers partnerships



## Buildings and Infrastructure



Digital strategy & EdTech tools  
for learning



Maintaining H&S standards and  
achieving efficiencies



Buildings and Grounds

# How can we help?

- ▶ What are we missing?
  - ▶ What else would you like to see?
  - ▶ How can we help you?
- 
- ▶ Parent View surveys - Juniors opens today for one week

2023 CLJS Parent Survey

