

Year 5



Spring 2



Our team

Year Leader – Mrs Sandy
Class Teachers & Teaching assistants
Jupiter– Miss Bevington with Mrs Hobday
Mercury– Miss Miles with Mrs Robinson and Mrs Cole
Neptune – Miss Knight with Miss Andrews
Venus– Miss Slingsby with Mrs Anderson
Cover Supervisors — Miss Bell and Mr Cheshire
ELSA—Mrs Colvin

Key dates

Thursday 7th March 2:45pm —World Book Day dress up and Poetry Performances
Tuesday 12th March—6pm —Maths information session
Thursday 14th March—Weald and Downland Museum visit—Jupiter and Neptune
Friday 15th March—Weald and Downland Museum visit—Mercury and Venus
Monday 18th—Friday 22nd March— Bikeability
Monday 25th March—Rocksteady Concert
Wednesday 27th March—2.30pm — Outdoor Play And Learning (OPAL) information session
Thursday 28th March—INSET school closed to children
Friday 29th March—Start of the Easter Holiday
Monday 15th April—Back to School First Day of Summer Term



English

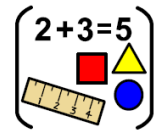
In English, we will start with a poetry week looking at different types of poems. We will then use the book Viking Boy to make comparisons with another

text and investigate the differences between formal and informal writing. We will make use of Point, Evidence, Explanation paragraphs to support this.

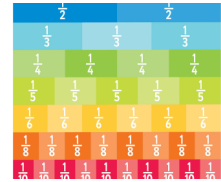
semi-colon, colon, PPE paragraph, formal, informal



This half term, we will be continuing our fractions work. We will be adding subtracting and multiplying mixed numbers. Afterwards we will begin to look at decimals and their relationship to fractions. We will add, subtract and round numbers with decimals.



Maths



mixed number, numerator, denominator, simplify, decimal, place value



PE

During our indoor PE sessions, we will be taking part in Real Gym, focusing on using hand apparatus and low apparatus.

balance, shape, travel, flight, rotation



We will also be developing skills within the game of tennis in our outdoor sessions.

forehand, backhand, serve, volley

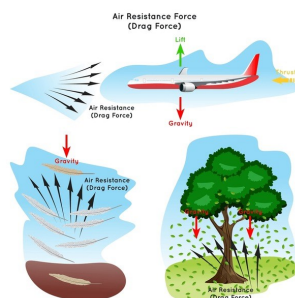


Science

Our focus this half term will be on forces. We will learn about gravity and the effects of air

resistance, water resistance and friction. We will look at how some mechanisms, including levers, pulleys and gears, allow a smaller force to have a greater effect.

gravity, friction, resistance, pull, push



Computing

Our creating media unit will be about creating graphics. We will focus on vector graphics, understanding that drawing tools can be used to produce different outcomes. We will learn that different shapes can be combined and layered to create a visual effect.

Our e-safety focus is online privacy and safety.

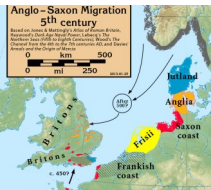
vector, resize, rotate, modify, layer





History

This half term we will continue with our enquiry question 'How was the Kingdom of England formed?' We will be exploring the impact of the Anglo-Saxons and the Vikings on the formation of England.



Anglo-Saxons, Vikings, migration, settler, settlement



French

In French, we will be learning about how to describe our classrooms. We will learn and respond to the question 'Qu'est-ce qu'il y a dans la trousse?' (What is in the pencil case?) We will also use the negative structure 'je n'ai pas de' (I do not have).



le crayon, les ciseaux, le stylo, la règle



PSHE

Jupiter and Venus class will continue with their Brain Buddies work.

Mercury and Neptune will continue to discuss money and also jobs.



self-care, self-calming, thinking, problem solving



RE

In RE, we will investigate the symbol of the cross in the Christian faiths and how this is used in the Easter story.

suffering, resurrection, cross, crucifix



DT

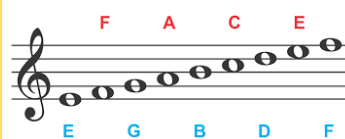
This term, we will be exploring what a cam is and explore different cams and their movements. We will then work together to design and build a toy which has a moving part.

cam, shaft, rotate, direction, prototype, feedback



Music

In Music, we will focus on composition using a note grid and stave to record a composition. We will also explore the importance of time signatures and how they can affect the notes in a bar.



compose, stave, crotchet, minim, semibreve, bar

General items

Please make sure your child is in the correct uniform. Full guidance is on our website.

Grey trousers/skirts; Bottle green sweatshirts/cardigans; White shirts/polo shirts; bottle green tie with gold stripe; **black shoes** (no coloured soles); black, grey or white socks/tights.



PE days



PE

Children should have a PE kit in school on PE days. They should have a T-shirt and jumper in their house colour; black shorts and tracksuit bottoms and plimsolls or trainers. Please remember children are not permitted to wear earrings in PE lessons and hair must be tied up.

Jupiter— Tuesday and Wednesday

Mercury—Monday and Thursday

Neptune— Monday and Thursday

Venus — Tuesday and Wednesday

Homework



SeeSaw

Most homework is set on Friday for return by the following Friday. TTRS



is set on Thursday and finishes on Thursday. All other homework is set on

Seesaw, paper copies are available. It is expected that all children complete their homework as detailed in the home-school agreement. Children may lose some breaktime for non-completion.



Library

Library

Year 5 have the opportunity to visit the library on Thursday. Our library is open to our families after school on Fridays until 4pm.



Consent form (trips, curriculum, medical, photography)

Please complete the following form regarding consents in Court Lane Junior School. This information will be used throughout the academic year. Please contact the school immediately if any details change.

Coming up in Summer 1

Second round of Bikeability sessions

Forest school