

Year 6



Summer 1



Anning



Darwin



Franklin



Hawking

Our team

Year Leader – Mrs Sandy

Class Teachers & Teaching Assistants

Anning—Mrs Thompson with Mrs Leunig and Mrs Oosterwijk

Darwin – Mrs Bull with Miss Wallace, Miss Ousby and Miss Robinson

Franklin – Mrs Wheeler and Mrs Shawyer with Miss Wade, Miss Oosterwijk and Mrs Tulk

Hawking – Miss Griffiths with Mrs Bingham, Miss Street and Miss Robinson

Small group work—Mr Barratt

Cover supervisors—Miss Bell and Mr Cheshire

ELSA – Mrs Colvin

Key dates

Monday 15th April—Back to School First Day of Summer Term

Monday 6th May— Bank Holiday—school closed

Tuesday 7th May— 2pm Mental Health Support Team Parents/Carers Anxiety Workshop

Monday 13th—Thursday 16th May—SATs week—Tests each morning

Monday 13th—Thursday 16th May—SATs Breakfast from 8:15am

Tuesday 21st May—Class photos

Friday 24th May—2:45pm Learning showcase

Monday 27th—Friday 31st Half term—School closed

Monday 3rd June—Back to School First Day of Summer 2

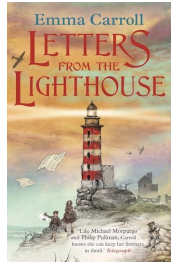
Monday 3rd June—Friday 7th June—Residential / Activities week



English

In English, we will be reading various texts which focus on World War 2. Using inferences from this text, coupled with our history work, we will write

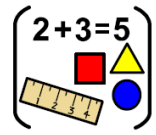
in various forms, including, non-chronological reports, letters and diaries. We will continue with daily grammar and spelling practise.



modal verb, passive verb,
colon, synonym,
homophone

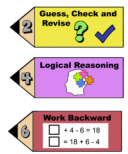
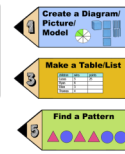
This half term, we will focus on problem solving and reasoning so we can revisit topics already covered.

This will include the 4 operations, fractions, decimals and percentages, geometry and algebra. We will continue to work on arithmetic fluency daily, including times tables.



Maths

bar model, symbols,
diagram, round, product,
factor, prime



PE

During our indoor PE sessions, we will be taking part in Real PE, focusing on static balance and developing jumping and landing skills .



core, control, torso, balance, rotate, transfer



We will also be developing skills to compete in various athletics events.

track, field, sprint, aim, target



Science

We will describe how living things are classified in broad groups based on similarities and differences. We will understand why classifying plants and animals based on specific characteristics is helpful. We will use our scientific skills to identify, group, and classify plants and animals.

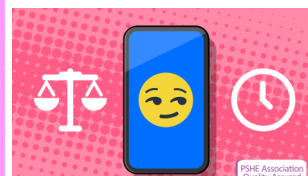
variation,
micro-organisms,
vertebrate,
invertebrate



Computing

There is no taught content this half term for computing. Children will be encouraged to use existing skills to support learning in other areas of the curriculum.

Our internet safety focus is health wellbeing and lifestyle.



healthy digital
balance,
technical strategy,
behaviour strategy



History

Our question will be, 'How did the World Wars shape Britain? We will learn about the events of World War II and identify changes that happened throughout this period. We will study the Blitz and understand how it affected men, women and children. We will also look at propaganda and identify where it was used during World War II.



*evacuee, invasion,
liberate,
propaganda,
rationing*



French

*mais,
parce que,
aussi, en plus*

Our French unit is called, La seconde guerre mondiale (the Second world war). We will use our existing knowledge alongside word banks to understand the life of an evacuee called Ralph.

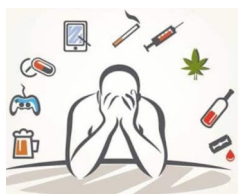
*En ville j'ai vu des bombes
mais à la campagne j'ai vu
des fleurs et des arbres.*



PSHE

During PSHE sessions, we will consider how drugs are used to support health and how they may impact health in a negative way.

We will discuss the place of alcohol and tobacco in today's society.



*substance,
addiction,
legal, illegal*



RE

Our RE work will focus on justice. We will discuss our own experiences of justice and how it relates to events in our lives and those of

others. We will consider the meaning of justice in the traditions of Christians and the value of justice in the lives of Christians and in their own lives.



*pharisees, injustice,
righteousness,
equitableness, morality*



Art

This half term, we will research the artist Sandra Evertson. We will observe and sketch medal designs, WWII art and Sandra Evertson's work. We will

then design and make a medal from clay, using and refining our clay sculpture skills.

*relief, impress
score, slip, blend,
armature*



Music



In Music, we will improvise with the song 'Down by the Riverside,' using a combination of notes. We will experiment with different notes; staying within the steady beat and in time with the backing track.



*compose,
improvise,
dynamics*

General items

Please make sure your child is in the correct uniform. Full guidance is on our website.

Grey trousers/skirts; Green or Yellow Gingham summer dress; Bottle green sweatshirts/cardigans; White shirts/polo shirts; bottle green tie with gold stripe; **black shoes** (no coloured soles or open toed sandals); black, grey or white socks or tights.



PE

PE days

Children should have a PE kit in school on PE days. They should have a T-shirt and jumper in their house colour; black shorts and tracksuit bottoms and plimsoles or trainers. Please remember children are not permitted to wear earrings in PE lessons and hair must be tied up.

Anning— Tuesday and Thursday

Darwin—Tuesday and Thursday

Franklin— Monday and Thursday

Hawking—Monday and Thursday



SeeSaw

Homework



Homework is set on Friday for return by the following Thursday.

It is set on Seesaw and consists of; spellings, topic words, TT Rockstars and, CPG Comprehension, Grammar and Maths books.



Library Library

Year 6 have the opportunity to visit the library on Friday. Our library is open to our families after school on Fridays until 4pm.

Coming up in Summer 2

Secondary transition days:

Springfield 3rd & 4th July

Purbrook Park 3rd July