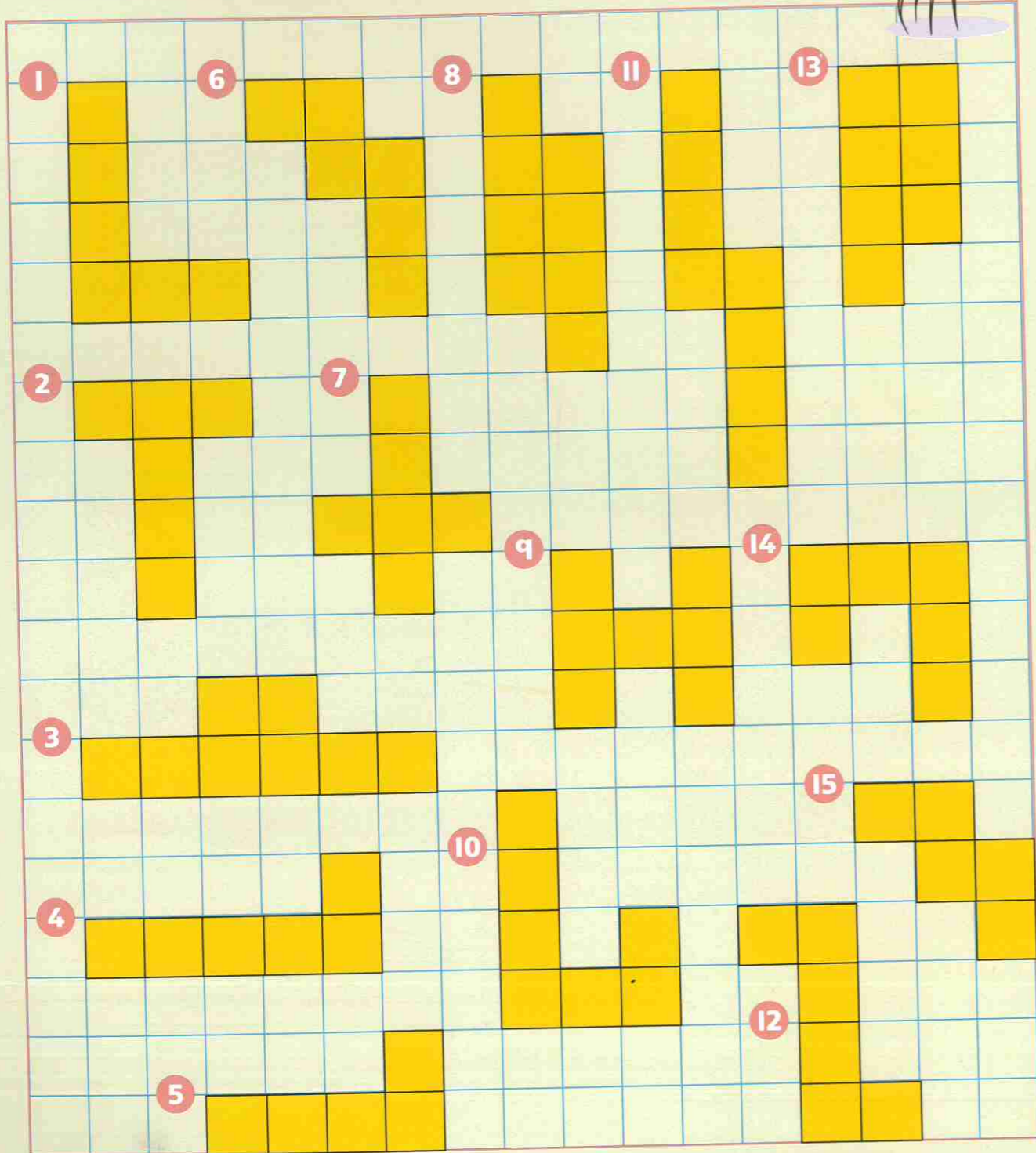
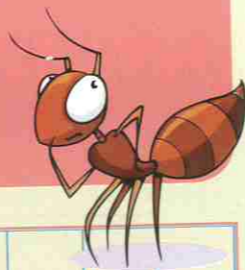


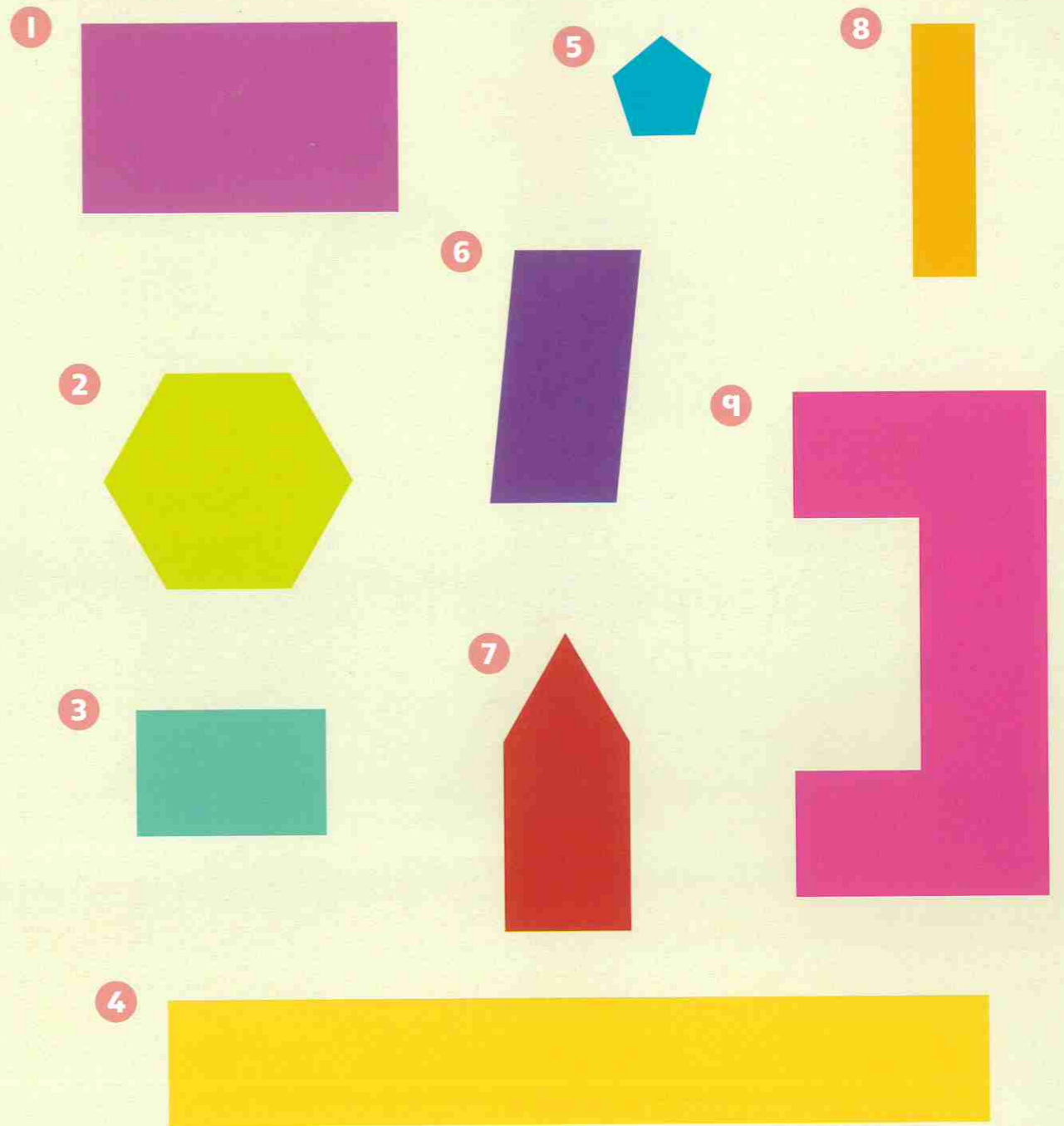
How many centimetres would Andy Ant have to walk to find the perimeter of each shape?



**THINK** Draw an 'L' shape of your own with a perimeter of 20 cm.

I am confident with finding the perimeter of rectilinear shapes.

Use a ruler to measure the perimeter of each shape.



Susie the slug is very slow. How many sides of a rectangle does she **have** to crawl around to work out the perimeter?

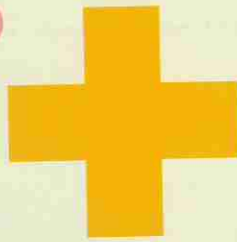
I am confident with finding the perimeter of regular and irregular polygons.

Use a ruler to measure the perimeter of each shape.

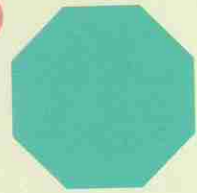
1



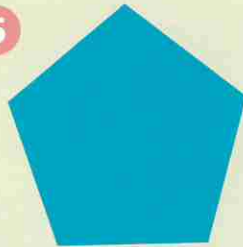
4



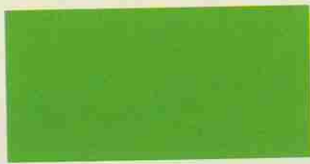
7



5



2

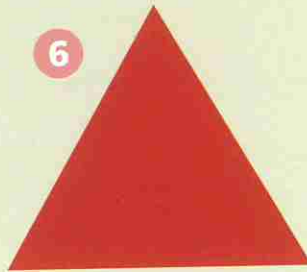


Do you need to measure all five sides?

3



6



8



Write the perimeter of a:

- 9 rectangle with a length of 10 cm and a side of 7 cm.
- 10 regular hexagon with a side of 4 cm.
- 11 square with a side of 11 cm.



Write a rule to work out the perimeter of regular shapes.



I am confident with finding the perimeter of regular and irregular polygons.