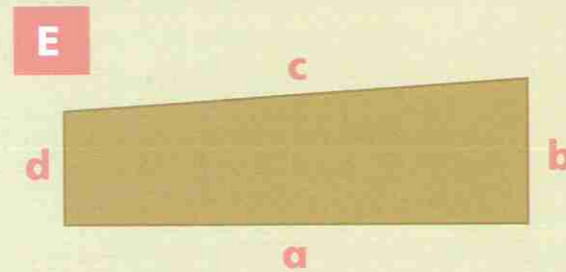
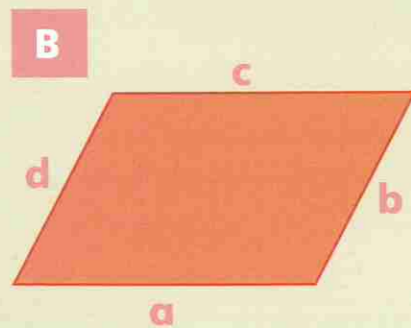
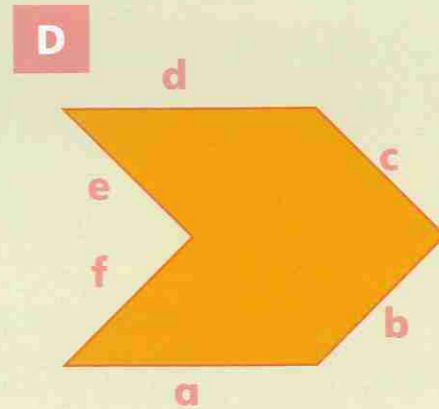
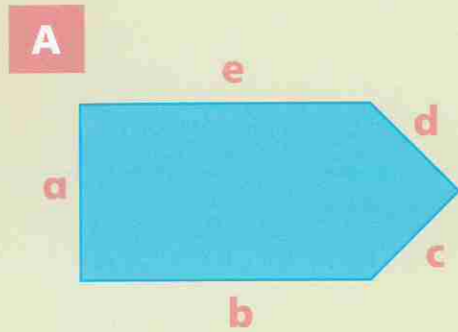
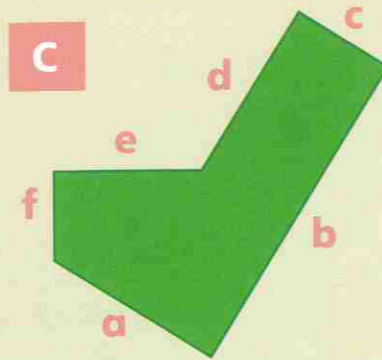


Look at the polygons below and answer these questions about each one.

- How many angles are 90° ?
- Which sides are perpendicular?
- Which sides are parallel?
- Is there a line of symmetry?



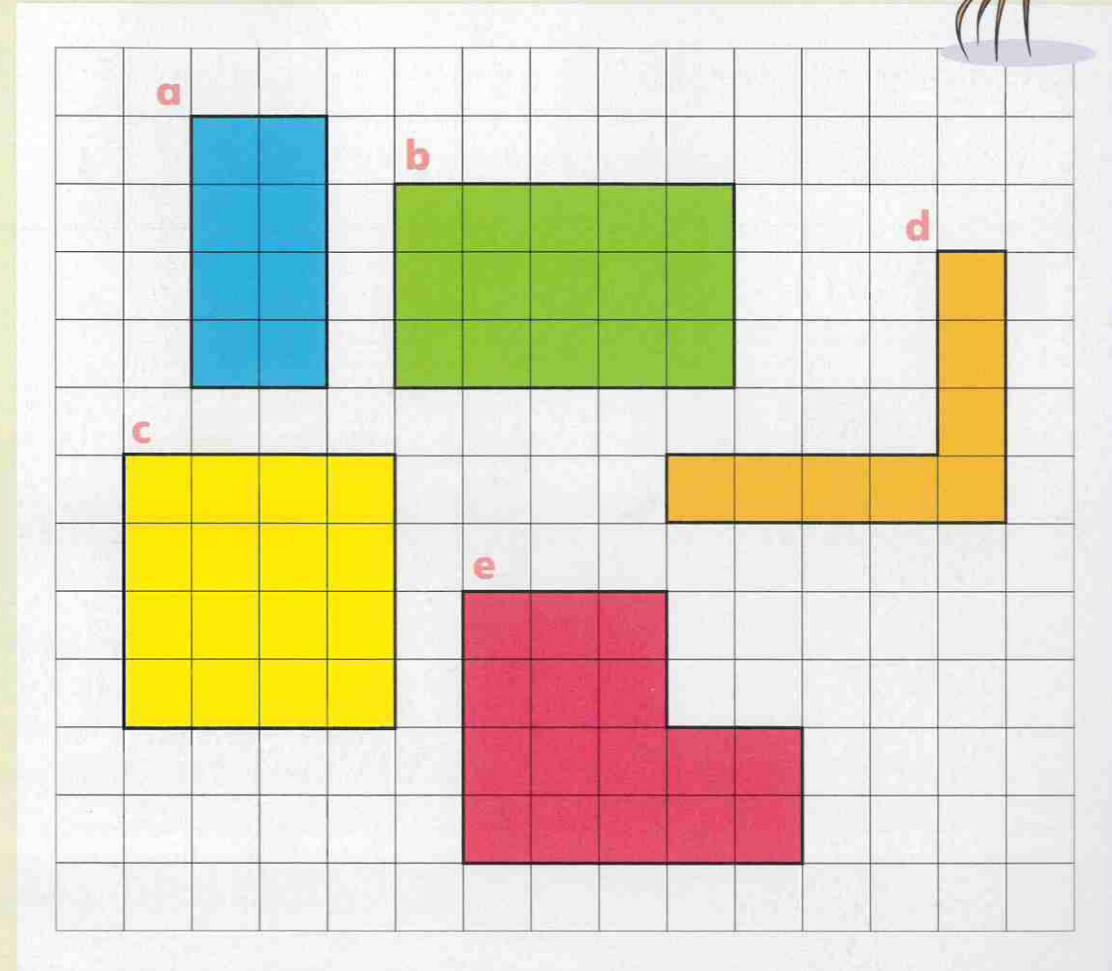
Draw a shape with a line of symmetry, one right angle and two parallel sides.



I am confident with recognising the properties of polygons, including lines, angles and symmetry.

Measuring perimeters

Write the length of each side in squares. Add the lengths together to calculate the perimeter of each shape.



- Shape a = squares
- Shape b = squares
- Shape c = squares
- Shape d = squares
- Shape e = squares

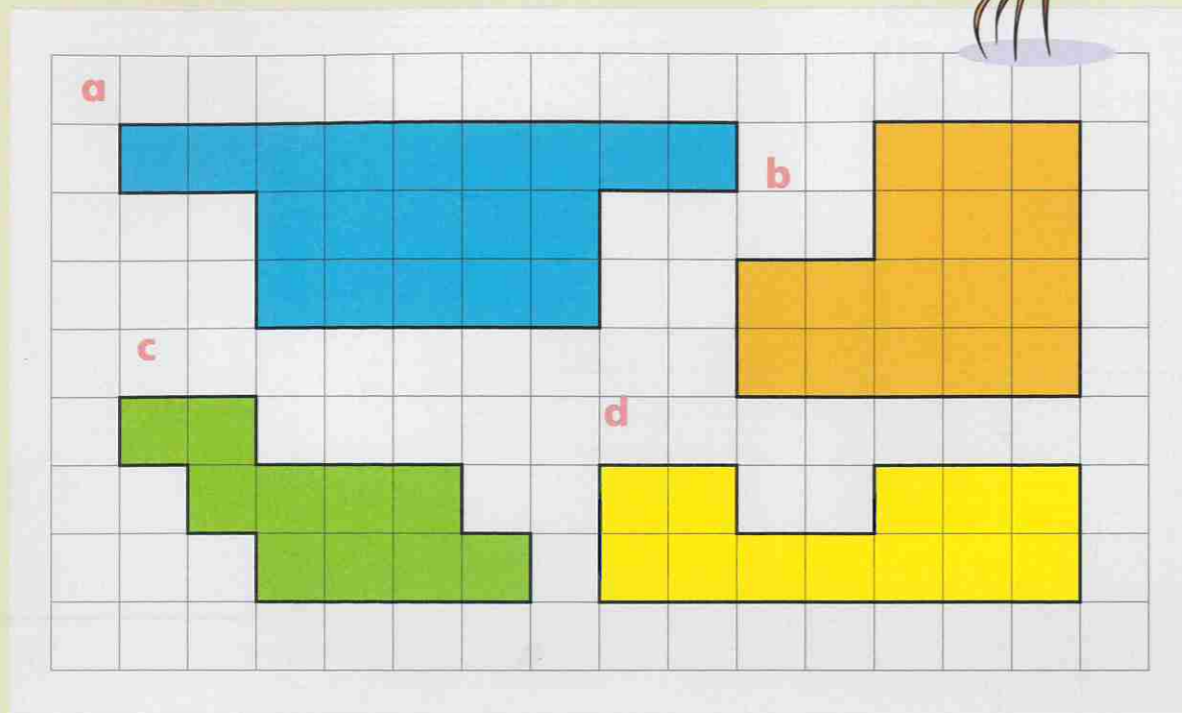
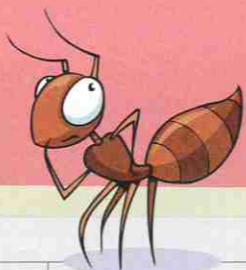


Draw a square with sides of 5 cm. What is its perimeter?



I am confident with measuring perimeters of squares and rectangles by counting centimetre squares.

Write the length of each side in squares.
Calculate the perimeter.



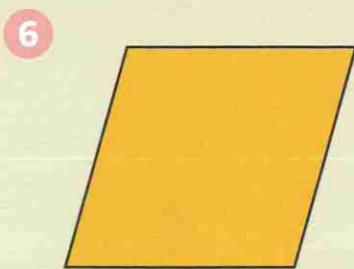
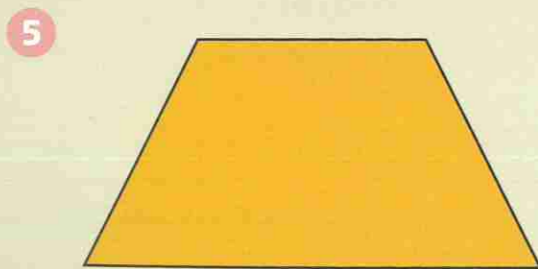
1 Shape a = squares

2 Shape b = squares

3 Shape c = squares

4 Shape d = squares

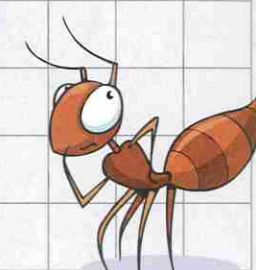
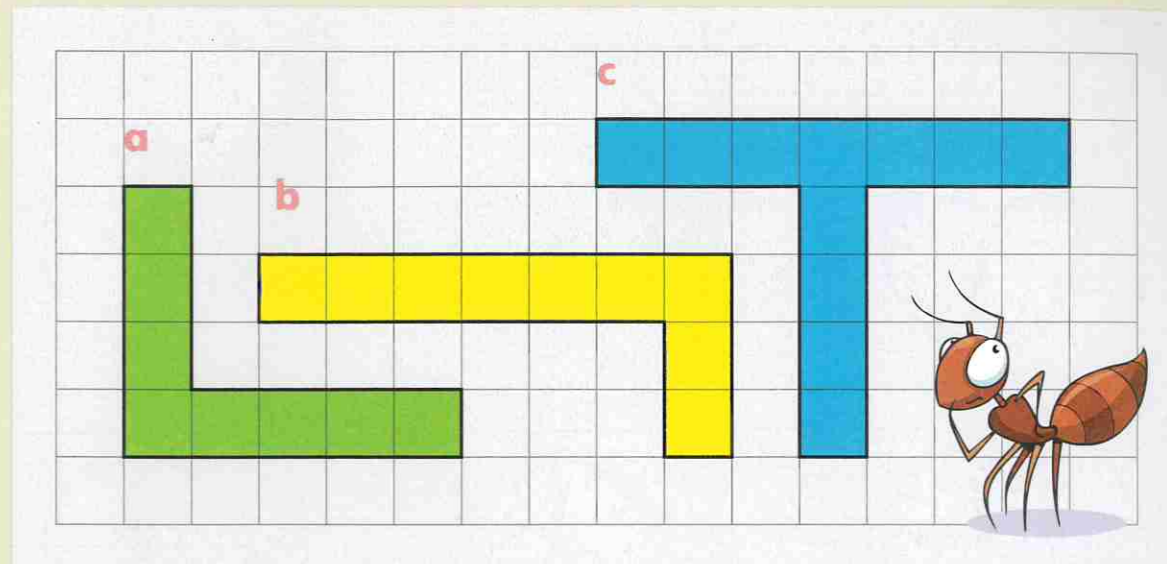
Measure each side of each shape.
Calculate the perimeter.



THINK Draw a square with sides of 7 cm.
What is its perimeter?

I am confident with measuring perimeters on squared paper and using a ruler.

Work out the perimeter of each shape.

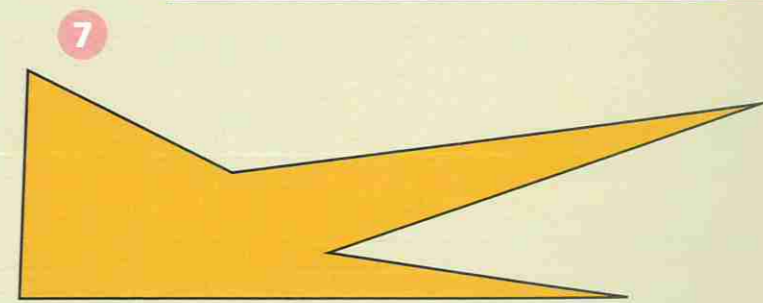
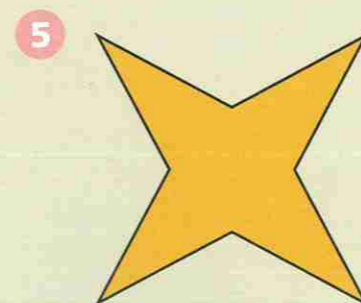
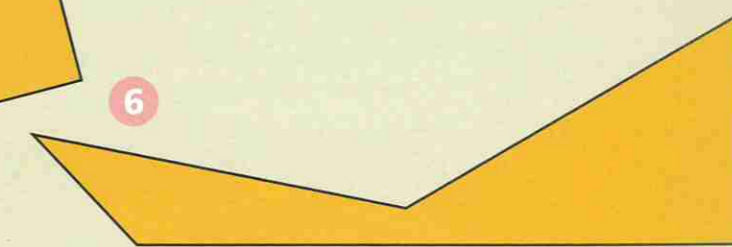
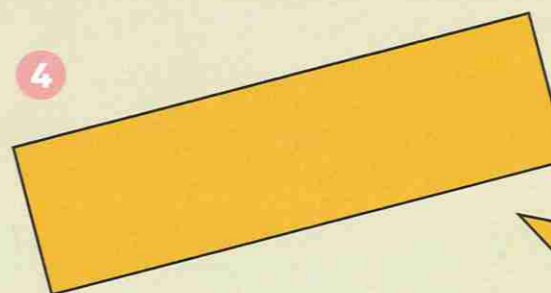


1 a = cm

2 b = cm

3 c = cm

Measure each side of each shape below.
Calculate the perimeter.



THINK Draw a shape with five sides. Measure the sides and find the perimeter to the nearest centimetre.

I am confident with measuring perimeters on squared paper and using a ruler.