

Superhero Game!



| | | | | | | | |
|--|--|--|--|--|--|--|--|
| $374 + 249 =$ Villain Request: Choose and complete a Supervillain Challenge Card. | $592 + 199 =$ Villain Request: Choose and complete a Supervillain Challenge Card. | | $393 + 342 =$ Villain Request: Choose and complete a Supervillain Challenge Card. | $295 + 542 =$ Villain Request: Choose and complete a Supervillain Challenge Card. | | $425 + 328 =$ Villain Request: Choose and complete a Supervillain Challenge Card. | Start |
| $498 + 283 =$ Villain Request: Choose and complete a Supervillain Challenge Card. | | | | | | | |
| | $485 + 482 =$ Villain Request: Choose and complete a Supervillain Challenge Card. | $746 + 145 =$ Villain Request: Choose and complete a Supervillain Challenge Card. | | $587 + 325 =$ Villain Request: Move on to a star square. | $476 + 385 =$ Villain Request: Choose and complete a Supervillain Challenge Card. | $587 + 294 =$ Villain Request: Move on to a star square. | |
| | | | | | | | $724 + 136 =$ Villain Request: Move on to a star square. |
| Finish | $194 + 694 =$ Villain Request: Do a Supervillain pose. | $745 + 127 =$ Villain Request: What would your Supervillain power be and why? | $424 + 274 =$ Villain Request: Practise your evil laugh. | $424 + 247 =$ Villain Request: Move on to a star square. | $209 + 487 =$ Villain Request: Move on to a star square. | | $225 + 277 =$ Villain Request: Move on to a star square. |



Take turns to roll a die and move the desired amount of spaces on the Superhero Game Board. If you land on a question, you must calculate the answer. If the answer is incorrect, you must complete the villain's request. The first person to rescue the people trapped in the building wins.

Superhero Game!



$$287 + 988 =$$

Villain Request:
Choose and complete
a [Supervillain
Challenge Card](#).

$$582 + 762 =$$

Villain Request:
Choose and complete
a [Supervillain
Challenge Card](#).



$$872 + 836 =$$

Villain Request:
Choose and complete
a [Supervillain
Challenge Card](#).

$$487 + 429 =$$

Villain Request:
Choose and complete
a [Supervillain
Challenge Card](#).



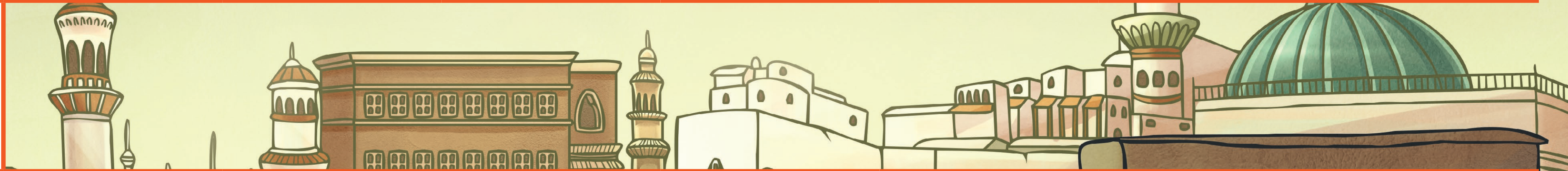
$$857 + 282 =$$

Villain Request:
Choose and complete
a [Supervillain
Challenge Card](#).

Start

$$964 + 764 =$$

Villain Request:
Choose and complete
a [Supervillain
Challenge Card](#).



$$875 + 278 =$$

Villain Request:
Choose and complete
a [Supervillain
Challenge Card](#).

$$865 + 782 =$$

Villain Request:
Choose and complete
a [Supervillain
Challenge Card](#).



$$724 + 498 =$$

Villain Request:
Choose and complete
a [Supervillain
Challenge Card](#).

$$676 + 872 =$$

Villain Request:
Choose and complete
a [Supervillain
Challenge Card](#).

$$765 + 287 =$$

Villain Request: Move on
to a star square.



$$572 + 879 =$$

Villain Request: Move on
to a star square.

Finish

$$723 + 892 =$$

Villain Request: Do a
Supervillain pose.

$$582 + 287 =$$

Villain Request: What
would your Supervillain
power be and why?

$$875 + 289 =$$

Villain Request: Practise
your evil laugh.

$$482 + 572 =$$

Villain Request:
Choose and complete
a [Supervillain
Challenge Card](#).

$$384 + 856 =$$

Villain Request: Move on
to a star square.



$$765 + 875 =$$

Villain Request: Move on
to a star square.



Take turns to roll a die and move the desired amount of spaces on the Superhero Game Board. If you land on a question, you must calculate the answer. If the answer is incorrect, you must complete the villain's request. The first person to rescue the people trapped in the building wins.

Superhero Game!



$$874 + 979 =$$

Villain Request:
Choose and complete
a [Supervillain
Challenge Card](#).

$$583 + 985 =$$

Villain Request:
Choose and complete
a [Supervillain
Challenge Card](#).



$$582 + 289 + 107 =$$

Villain Request:
Choose and complete
a [Supervillain
Challenge Card](#).

$$374 + 284 + 424 =$$

Villain Request:
Choose and complete
a [Supervillain
Challenge Card](#).



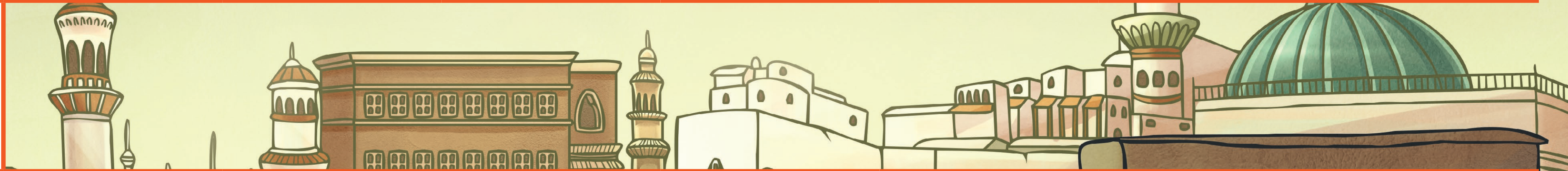
$$573 + 875 =$$

Villain Request:
Choose and complete
a [Supervillain
Challenge Card](#).

Start

$$871 + 983 + 185 =$$

Villain Request:
Choose and complete
a [Supervillain
Challenge Card](#).



$$587 + 193 + 867 =$$

Villain Request:
Choose and complete
a [Supervillain
Challenge Card](#).

$$876 + 927 =$$

Villain Request:
Choose and complete
a [Supervillain
Challenge Card](#).



$$597 + 289 + 273 =$$

Villain Request:
Choose and complete
a [Supervillain
Challenge Card](#).

$$674 + 287 =$$

Villain Request:
Choose and complete
a [Supervillain
Challenge Card](#).

$$897 + 783 =$$

Villain Request: Move on
to a star square.



$$573 + 972 + 845 =$$

Villain Request: Move on
to a star square.

Finish

$$587 + 264 + 297 =$$

Villain Request: Do a
Supervillain pose.

$$883 + 893 + 487 =$$

Villain Request: What
would your Supervillain
power be and why?

$$573 + 973 =$$

Villain Request: Practise
your evil laugh.

$$497 + 482 + 586 =$$

Villain Request:
Choose and complete
a [Supervillain
Challenge Card](#).

$$986 + 628 + 309 =$$

Villain Request: Move on
to a star square.



$$578 + 876 =$$

Villain Request: Move on
to a star square.



Take turns to roll a die and move the desired amount of spaces on the Superhero Game Board. If you land on a question, you must calculate the answer. If the answer is incorrect, you must complete the villain's request. The first person to rescue the people trapped in the building wins.